

Anyplan[®] Product Overview

Contents

Contents	2
Introduction.....	2
Who Uses Anyplan®?	3
Common Features, Common Resources	4
Anyplan® SmartNet™	4
Anyplan® Gantt chart and data grid	4
Histograms and S-Curve Charts	5
Anyplan® Resource Manager.....	6
Anyplan® Calendar Manager.....	6
Anyplan® Templates Module	7
Anyplan® Import/Export Module.....	7
Anyplan® Portfolio Module	7
Planning and Scheduling.....	7
Collaboration and Security	8
Alternative Breakdown Structures.....	8
Unique names and Renaming	8
Anyplan® Print Module	8
Anyplan® Reporting	9
Anyplan® Talk-to-Me Server.....	9

Introduction

Anyplan® is the first professional integrated planning system designed to work across the domains of project management, maintenance and manufacturing. Companies can now use one planning solution across the whole company.

THE XYMPHONIC SYSTEMS BENEFIT

Anyplan® has been designed on two fronts: for ease of use out of the box; and for customization and integration into scalable enterprise solutions.

INTENDED AUDIENCE

This White Paper is intended for a general audience including end-users, partners, customers, technical pre-sales and systems integration professionals.

RELATED READING

Please read the “Anyplan® for System Integrators” White Paper for a more detailed view of the technology, architecture and customizations potential of Anyplan®.

Further white papers can be found [here](#).

WHITE PAPER OVERVIEW

This White Paper contains an overview of the Anyplan® features and describes the many aspects of Anyplan® that can benefit customers across the domains of project management, maintenance, supply chain and manufacturing.

LATEST RELEASE

The latest release is Anyplan V4.0

Why Anyplan®?

Anyplan® is an integrated planning and scheduling system developed by Xymphonic Systems AS.

Anyplan® is the first professional integrated planning system designed to work across the domains of project management, maintenance, supply chain and manufacturing. Companies can now use one planning solution across the whole company.

It is a **multi-user** system with built-in **portfolio** capabilities.

ANYPLAN DELIVERS:

- **Ease of Use:** we are passionate about attractive, user-friendly interface design.
- **Modularity and Customization:** we ensure that our solution partners can configure customer solutions quickly and effectively from our product suite.
- **Built for Integration:** so that the planning and scheduling systems can collect and feed data into other enterprise systems.
- **Fast, Scalable and Collaborative:** it can be used for very large plans and schedules and run by international teams.

Who Uses Anyplan®?

Anyplan® is used by project managers, professional planners, business managers, and scheduling professionals.

ANYPLAN® FOR PROJECTS

Anyplan® can be used for **project management** and can replace other common project management systems for both standalone and multi-user project plans.

Anyplan® sets new standards in simple, elegant and user-friendly interface design.

ANYPLAN® FOR MAINTENANCE AND REPAIR

In **maintenance planning** mode Anyplan® is typically integrated with a Maintenance Repair and Overhaul (MRO) system such as IBM Maximo or IFS. The MRO system supplies details of upcoming and planned maintenance and Anyplan® is used to visually schedule and forecast

this work in combination with any related project activities that might be taking place or using the same resources.



Fig. 1 Anyplan for Maintenance

ANYPLAN® FOR SUPPLY CHAIN MANAGERS

Anyplan® can be used for transportation and cargo planning. A version of Anyplan® called PortPlan™ developed with a leading supplier of port information systems is an example of strategic and operational cargo and vessel planning.

Planning: Vessels Port Calls by Port

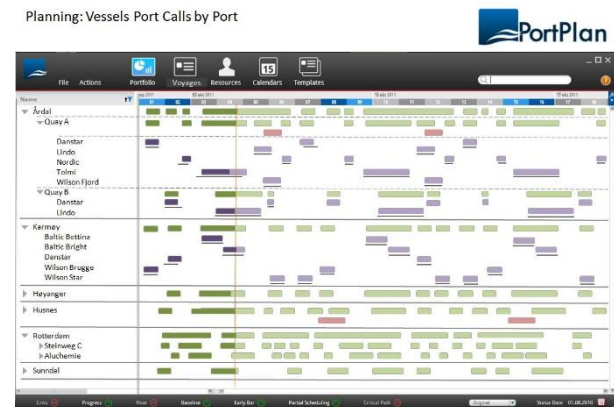


Fig. 2 PortPlan - Plan of vessels visiting ports

ANYPLAN® FOR MANUFACTURING

Anyplan® is the most flexible and user-friendly **manufacturing planning and scheduling** system in the market. Anyplan® integrates with any ERP system to provide a unique insight into the business processes.

Where resources are shared with development projects such as pilot product programs, implementation of new machinery or regular maintenance stops in the plant, Anyplan®'s manufacturing schedule can combine these plans for optimal utilization of resources at minimum cost.

Common Features, Common Resources

There are many features that are common across all the planning and scheduling domains. Often the differences lie in the business rules that drive the features. The following sections describe features that are common to all planning domains.

In this context projects may refer to any plans that run across all domains.

Anyplan® SmartNet™

ANYPLAN® SMARTNET™ AND CORE SERVICES

Common to all planning and scheduling is a collection of related activities with their corresponding calendars and resources.

SmartNet™ is an in-memory object network that models the complete portfolio of items in a plan.

The network is served up to all users from an Anyplan® server and partially replicated in the Anyplan® Windows client:

- Permanent storage is in a database;
- All changes saved by users update the network on the server;
- The size of the network and the number of activities, calendars, resources it can contain is constrained only by server memory.

Anyplan® Gantt chart and data grid

The primary view of a plan is the combined Data Grid and Gantt chart. In Anyplan® this has been designed to occupy as much of the screen as possible with attractive styling and easy to use features.

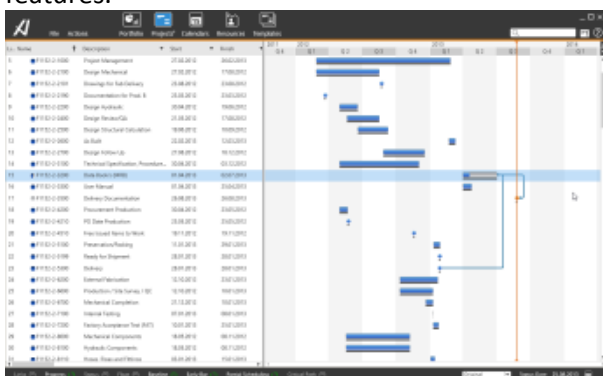


Fig. 3 Gantt chart and data grid

DATA GRID

The Data Grid is an easy to use way of entering and displaying activities and data. It can be used for direct entry or as a canvas for copy and paste.

The grid can be controlled by menus and short cut keys for fast editing and data entry.

The grid supports many data fields including custom fields that may be added by customers or 3rd party systems integrators. Columns can be hidden and moved.

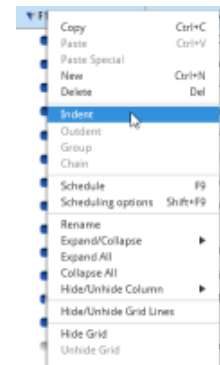


Fig. 4 Context menus

FILTERING AND SORTING

The Data Grid supports extensive sorting and filtering mechanisms including multi-column operations.

Anyplan® filtering supports full real-time calculations so that all summary calculations and charts are the result of filtered plans or portfolios of plans.



Fig. 5 Sort and Filter

GANTT CHART

The Gantt chart is a visualization of the plan and can show many of its important aspects:

- Start/Finish times and Durations;
- Progress;
- Status (behind or ahead of schedule)
- Links between activities;
- Child/Parent relationships;
- Due dates;
- Baselines;
- Float and Slack;
- Critical paths;
- Slots and routes.

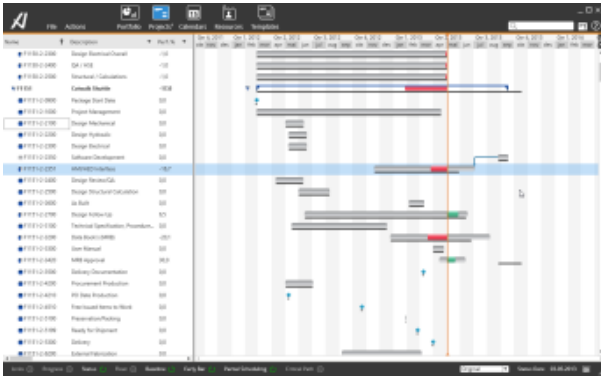


Fig. 6 The Gantt in Status view mode

Plan and Activity Properties

Anyplan® provides properties panels that can be selected and opened very quickly on any activity and at any level in the structure.

Standard and custom properties panels can be kept open and used for input or viewing of many details

associated with items in the

plan.



Fig. 7 Any panel at the click of a mouse

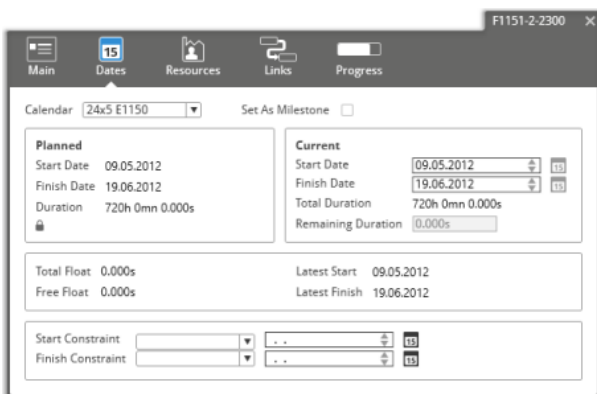


Fig. 8 Example Property Panel

LINKING ACTIVITIES

The Anyplan® Gantt chart is highly interactive and includes the ability to create instant relationships between activities and parents.

Drag the hooks and choose any one of the available anchor points that appear to

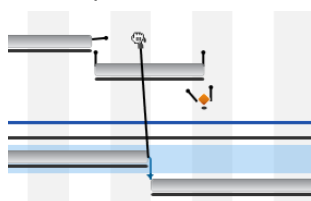


Fig. 9 Activity links

create the relationship.

Histograms and S-Curve Charts

The Anyplan® Charting Module has two standard views: Histograms and S-Curves.

HISTOGRAMS

The Resource Histogram is a predefined chart displaying three data series; planned, actual and forecast quantities.

Planned quantities are the planned hours of the project.

Forecast or remaining quantities are the estimated remaining hours needed in order to

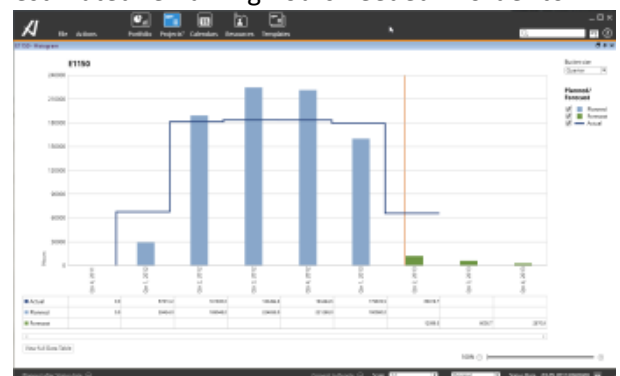


Fig. 10 Resource Histogram

complete the project.

S-CURVES

The S-curve is a predefined chart displaying the earned value (EV) curves for the project.

By default the curves and values are calculated based on percentages (of the total) instead of cost values. Users can easily decide to show curves based on cost (and vice versa).

The following curves can be displayed:

- **Budget curve**
Planned % or Budgeted Cost of Work Scheduled;
- **Earned Value curve**
EV % or Budgeted Cost of Work Performed;
- **Actual curve**
Forecast % or Actual Cost of Work Performed. This consists of two elements: actual cost and (any) remaining/forecasted cost.

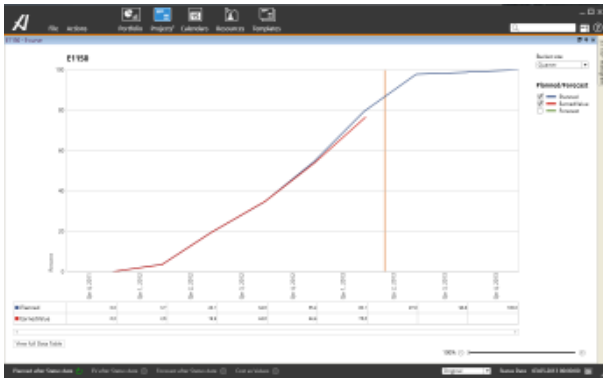


Fig. 11 S-Curve

MULTI-WINDOWING OPTIONS

All charts can be displayed full-screen, floating or docked. The charts remain 'live' and respond to any changes made to the Gantt such as changes to resources or filters:

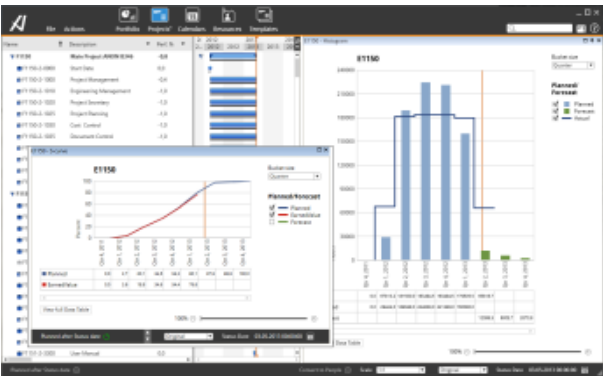


Fig. 12 Multi-windowed Charts

Anyplan® Resource Manager

The Resource Manager is used to create and maintain hierarchies of resource groups and resources. These can be defined with common attributes such as contact information, usable capacity, calendars and default costs based on variable or fixed rates.

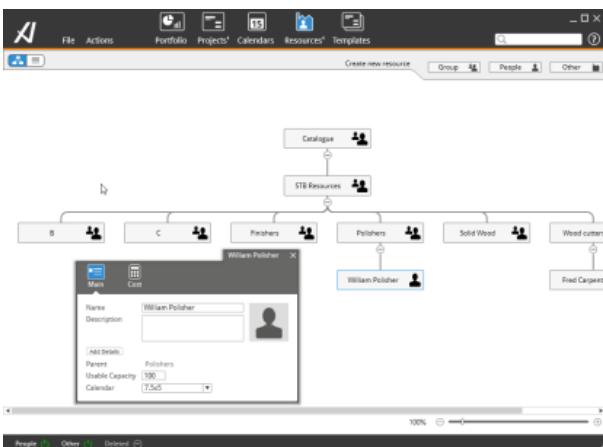


Fig. 13 Resource Network

Resource from an ERP system can be imported through the Anyplan® "Talk-to-Me" Integration Service so that the resources do not need to be entered and managed manually or in two places.

RESOURCE USAGE AND HISTORY

Resources are applied to planning activities using drag and drop from a list or via imported ERP information. They will then apply their default settings to the activity duration and can be adjusted as required. Anyplan® can be used to track planned and actual resource quantities and costs and provides a history of resources that have been used by an activity over time.

RESOURCE PROFILES

Anyplan® supports **Resource Profiles** or distributions that can be used to model non-linear resource consumption. For example, they can be used to incur costs immediately after the activity starts or used to model a resource to only work at the beginning and at the end of the activity.

RESOURCE CAPACITIES

Resource Capacities can be calculated and tracked through departmental and individual resources and availability calendars. Capacity can be charted on the resource histogram so that the plan can be quickly adjusted within the available limits.

Anyplan® Calendar Manager

Calendars created in the **Calendar Manager** drive scheduling for most plans created in Anyplan®. Any number of independent or linked calendars can be established. Linked calendars can inherit "events" (e.g. holidays) from parent calendar(s) and these events, combined with any local events form the foundation for calculating available time.

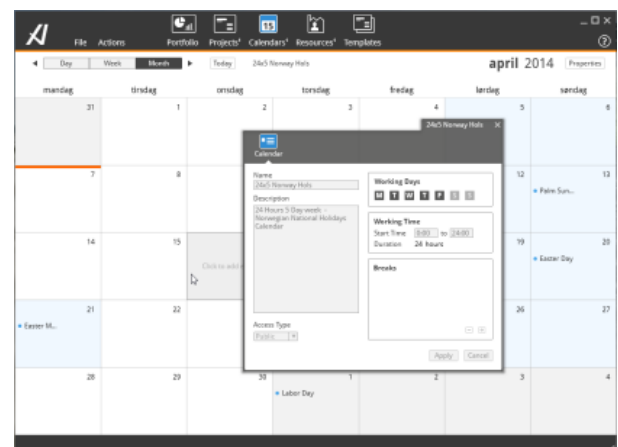


Fig. 14 Calendar and Settings

Anyplan® Templates Module

Anyplan® provides a template function that makes it easy to reuse plans and activities. Any activity, plan and link can be saved with or without resources and used as the basis or a starting point for creating new plans. Templates can also be inserted into existing plans and reused by taking a copy and then fill in the variable parts. Templates can be created manually or from a plan by using the 'Save as...' function or as a copy from an existing project. Templates can be organized, deleted and maintained from a Template browser. The template 'quick list' - a mini panel listing available templates – provides drag and drop into a plan.

Anyplan® Import/Export Module

Anyplan® can import plans from Microsoft Project in the form of MPP and XML files.

Projects can be exported in the form of Microsoft Project compatible XML files.

Full activity data structures can be copied to Microsoft Excel and pasted back from Microsoft Excel.

Anyplan® Portfolio Module

Anyplan® was designed to run portfolios from the start. The SmartNet™ can deliver consolidated views across its whole network of plans and activities.

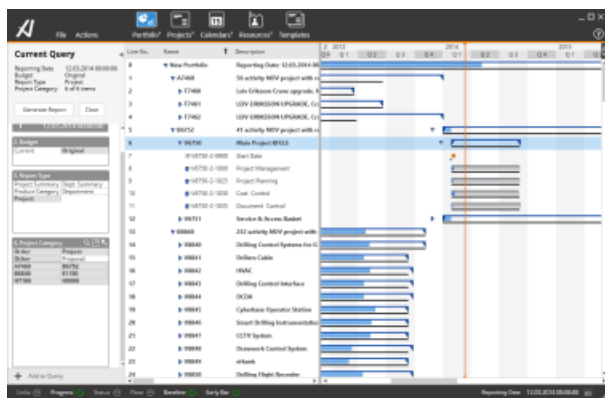


Fig. 15 Anyplan Portfolio Selection and View

The portfolio views are similar in design and functionality to the standard Gantt, Histogram and S-Curve views.

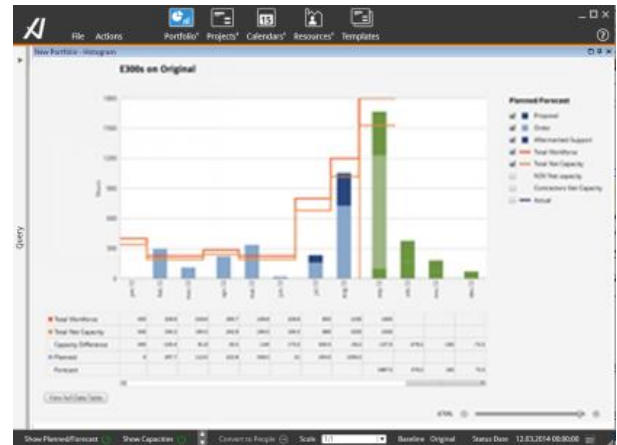


Fig. 16 Portfolio Histogram showing hours by project category and capacities of workforce and contractors

Planning and Scheduling

Scheduling is an action that is analyzing the planned activities, also referred to as network analysis. Activity duration, dependencies between the activities and any date constraints will all influence the result of the analysis. All activities are moved as early or as late as possible, depending on which schedule option that has been chosen.

The Scheduling Engine has different options and business rules for project management, manufacturing and maintenance.

Advanced maintenance scheduling is available using the Planning Agent to plan both short and long term maintenance according to business rules such as resource availability or load levels.

CRITICAL PATHS

When a project is scheduled the scheduler calculates Float for the activities. Based on this information Anyplan® can show users the Critical Paths (CPM).

SCHEDULING OPTIONS

Anyplan® is delivered with common scheduling options as standard. These can be extended or overwritten for more bespoke scheduling requirements.

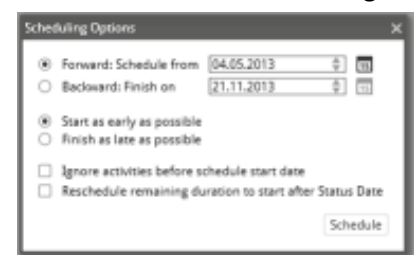


Fig. 17 Scheduling Options

BASELINES

When a schedule is established a data set of this can be saved as an original plan. This is a copy of the project status at the time it was created and includes data for dates, durations, resources and cost. The baseline data set is used for comparison when status updates are performed to see how the current status is against the saved baseline.

There are two standard baselines defined in Anyplan® but these can be customized to meet an organization's requirements.

Collaboration and Security

Anyplan® is a multi-user system meaning that several people can update a plan at the same time. Collaboration features are available to help in this process.

PROJECT NOTIFICATIONS

It is possible to see if another user has a project open through a notification icon and window. Notifications are instant but not intrusive.

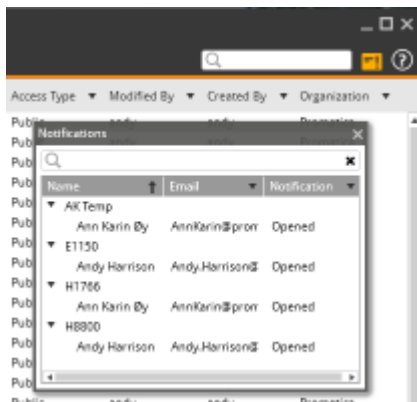


Fig. 18 Who else has this project open?

PROJECT LOCKING

Projects can be locked for major updates. In this state others can only open them as read-only. Anyplan will soon include activity-level locking.

ROLE-BASED ACCESS-CONTROL

Administrators and users have extensive control over who can access different projects, resources and calendars. Anyplan® provides control over data fields, availability by department or partners, or by categories of information. Information can be hidden from users or presented in a read-only format depending on the authorization of the users.

Alternative Breakdown Structures

The function called Alternative Breakdown Structures (ABS) (i.e. reporting structures) can be used to create structures in order to create reports for special needs. These needs could be to reorganize the project to look at e.g. products (deliverables in the project) or by department. An extra summary level can be added into the project in order to display rolled up information for sets of activities. These structures can be saved and reused when needed.

Unique names and Renaming

Anyplan® supports a wide variety of business rules. For example, some organizations require that the names of plans, activities and resources are unique for synchronization against ERP systems.

When using the 'Save as...' function to create a copy of a project, calendar or template, it is easy to give the new created item a new name. In addition to this, Anyplan® provides a rename functionality that makes it possible to rename several items in one operation using a Rename dialog.

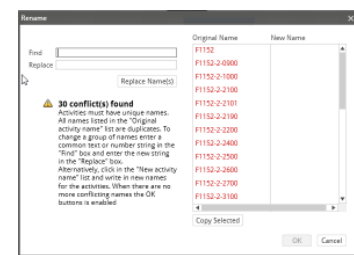


Fig. 19 Renaming Duplicates

This dialog makes it possible to rename by typing the new name directly, by using a copy mechanism or by using a Find and Replace function found in the dialog.

Anyplan® Print Module

The Gantt view, S-curve and Histogram of a plan can be printed with a range of options such as a date range. Date range filtering can be used to remove old items from the printed report of a large project, hide activities already completed or activities that are not yet started.

Margins, scaling, orientation, auto page breaking, paper size and print selection can be set. Headers and footers can be applied and images, text and custom fields can be added and formatted. These can be customized as organizational defaults.

Anyplan® Reporting

The Anyplan® Reporting is a Supply Chain module that simplifies planning and reporting. It provides a **Web-based** interface to the Anyplan® planning system. Features provided by Anyplan® Reporting are:

AUTOMATING PROGRESS REPORTING

Anybody with reporting responsibilities can use the web or Microsoft Exchange interfaces to report progress. No searching or complex logon procedures – the user is automatically sent to e.g. a web page with all activities across all projects.

PLAN AND REPORT PROGRESS ON SUB-CONTRACTED ACTIVITIES

Sub-contractors can log on to Anyplan via a web interface to plan work, report on progress and/or why things are not going according to plan.

COMPONENT DELIVERIES

Suppliers can use the Anyplan web interface to confirm deliveries of (critical) components, or to send information on why deliveries cannot be met.

ALARM SERVER

The alarm server keeps track of all planned actions and will prompt users to report or send e-mails to managers, both internally and externally, to ensure that reporting deadlines are met.

Anyplan® Talk-to-Me Server

Anyplan® provides an integration framework that that can be administered using the Microsoft Management Console. It provides integrations services to partner systems such as Microsoft (Exchange server and Dynamics), IBM (Maximo), IFS ERP suite, and SAP.

The Talk-to-Me server is also used for synchronizing activity information to Outlook and Google calendars:

ANYPLAN® CALENDAR SYNCHRONIZATION

The Anyplan® CalSync module provides synchronization of plans and their activities into popular calendars such as those from Microsoft and Google.

MS Exchange Synchronization

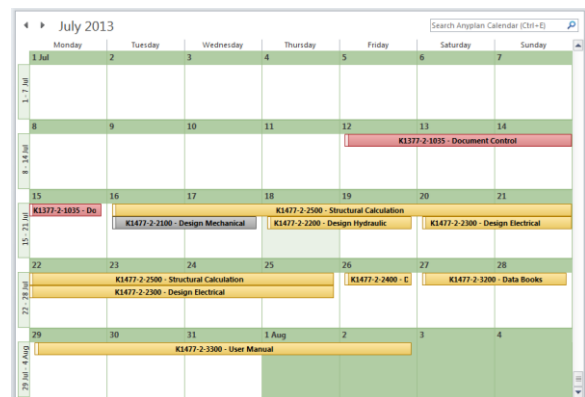


Fig. 20 Anyplan Activities in Microsoft Outlook

Anyplan® can synchronize activities to Microsoft Exchange. The activities (as calendar events) can then appear in any Microsoft Exchange connected device such as Microsoft Outlook, Office Outlook Web Access, and a wide variety of mobile devices.

Anyplan® Outlook Add-in

An Outlook Add-In provides custom Outlook UIs for viewing activities and reporting on progress.

Google Calendar Synchronization

Anyplan® can synchronize activities to Google Calendar.



Fig. 21 Anyplan Activities in an iPhone

For more information please contact Xymphonic Systems:

MAILING ADDRESS:

Xymphonic Systems AS
P.O Box 747
N-4666 KRISTIANSAND, Norway

Email: roger.berntsen@xymphonic.com

Telephone: + 47 90 581840